

**BADGE LAB FIRST AID  
STAMP**

**WEEKLY WAG LETTER  
BOXING &  
GEOCACHING STAMP**

**VALENTINE'S DAY  
STAMP**

**NATIONAL PIZZA  
DAY STAMP**

**WEEKLY WAG FIRST  
AID KIT STAMP**

**BONUS  
STAMP**

**BONUS  
STAMP**

**BONUS  
STAMP**

**WEEKLY WAG TRAVEL  
SAFETY STAMP**

**NATIONAL BISCUIT  
DAY STAMP**

Name:

\_\_\_\_\_

Dog(s) Name/Age:

Place Photo Here

**BADGE LAB MASSAGE  
STAMP**

**WEEKLY WAG  
DISASTER PREP  
STAMP**

**DR. SEUSS DAY STAMP**

**PASSPORT**



*February 7 through March 6*

**BONUS STAMP BADGE  
LABS**

**BONUS STAMP  
THE WEEKLY WAG**

**BONUS STAMP  
WEEKLY  
CELEBRATION**

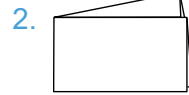


**Dog Scouts of America  
Virtual Event**

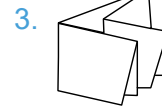
# Folding Instructions



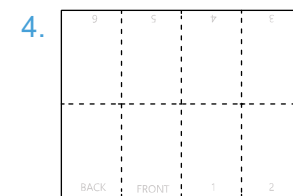
Fold 8.5x11 paper in half lengthwise (so printed sides are on the outsides).



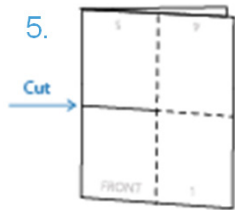
Fold in half lengthwise.



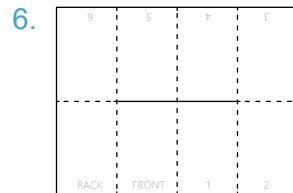
Fold in half lengthwise again.



Open paper up.



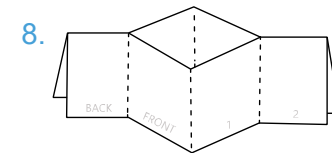
Fold entire paper in half widthwise and cut on the solid line.



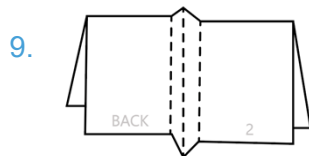
Open paper up.



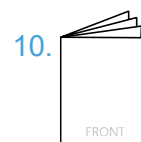
Fold lengthwise.



Push sides together to create an open diamond in the center.



Push through the diamond so all four sides meet.



Collapse all pages so the Front and Back pages are in the correct spots.

## Final folded product

If you follow the directions correctly, your final folded product should look like the image below.

